

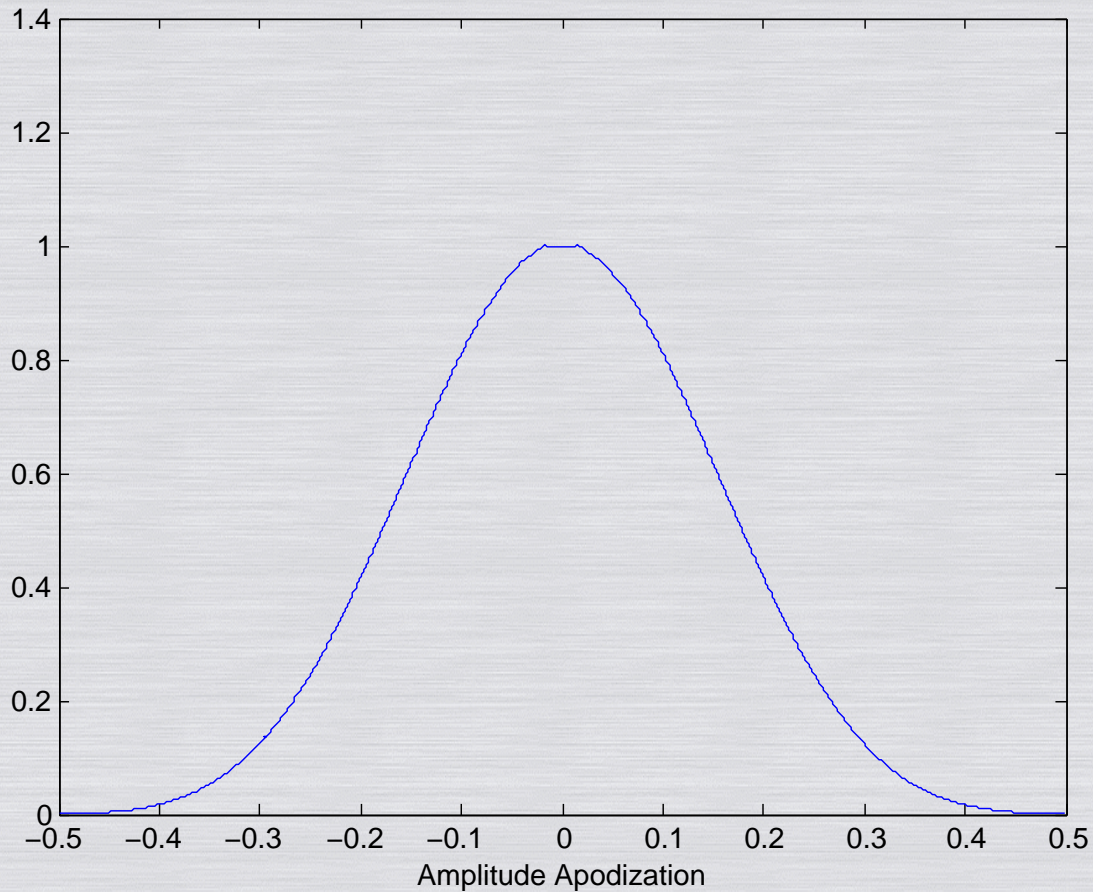
The Limits of High-Contrast Imaging in Visible Light

Robert J. Vanderbei

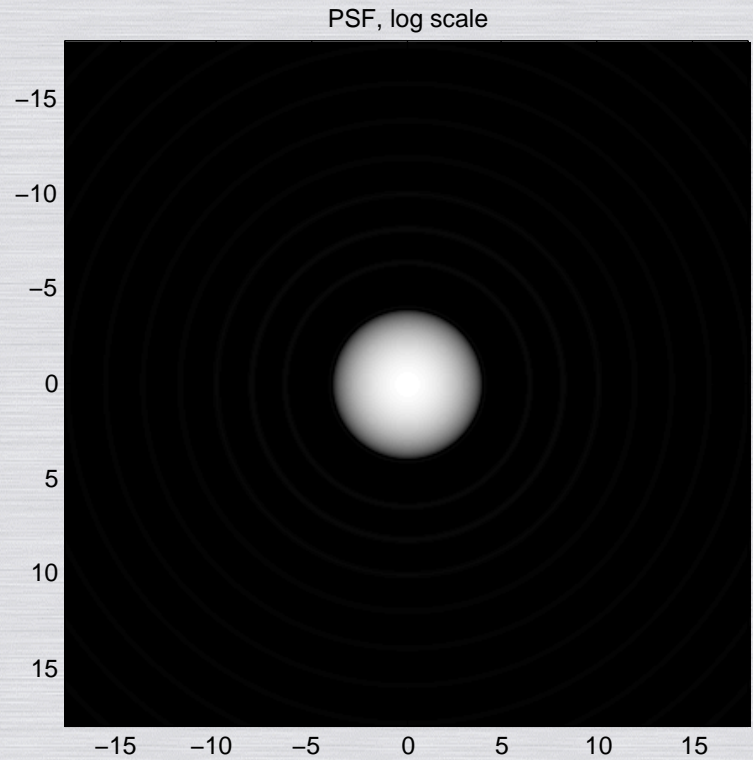
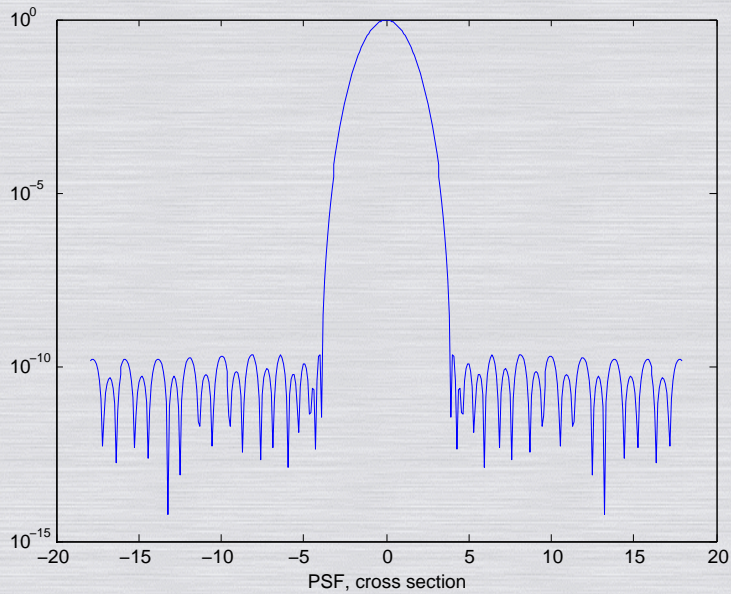
2009 October 30

TPF Group Meeting

<http://www.princeton.edu/~rvdb>

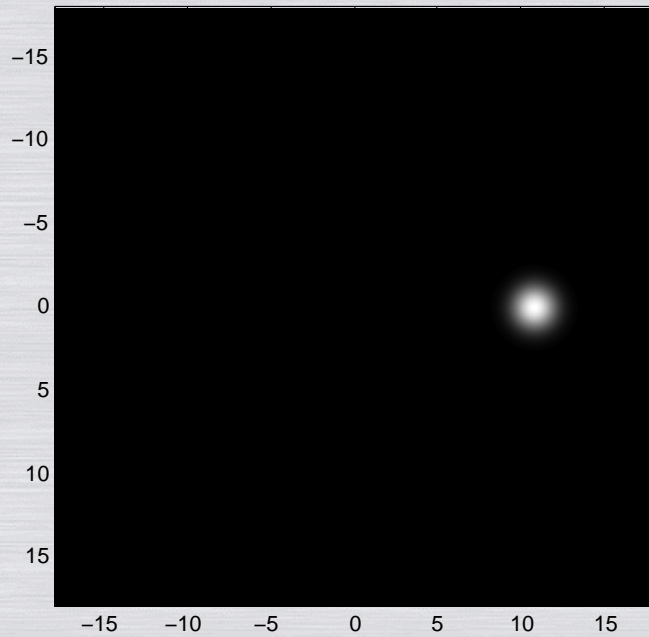


Apodization profile designed to achieve high contrast at close inner working angles. The plot shows amplitude. Intensity is the square of the amplitude.

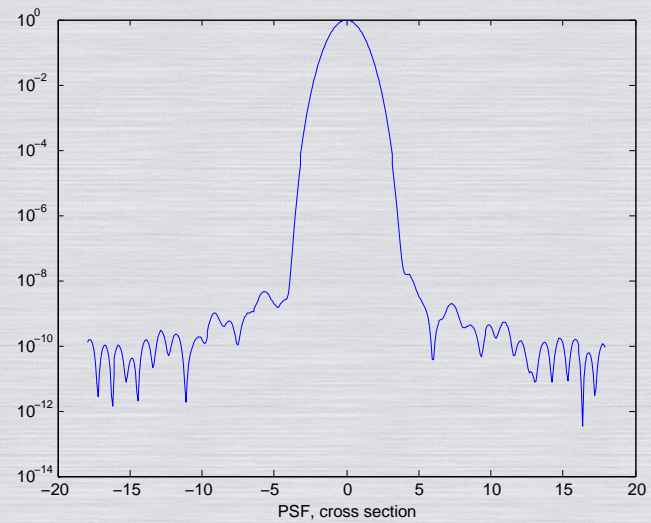
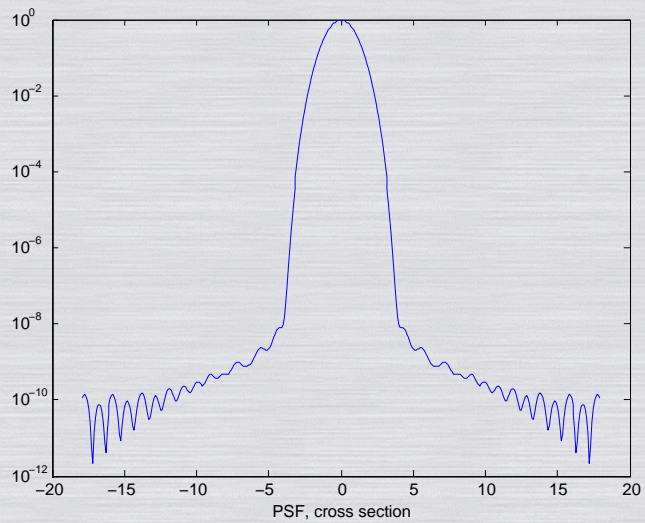
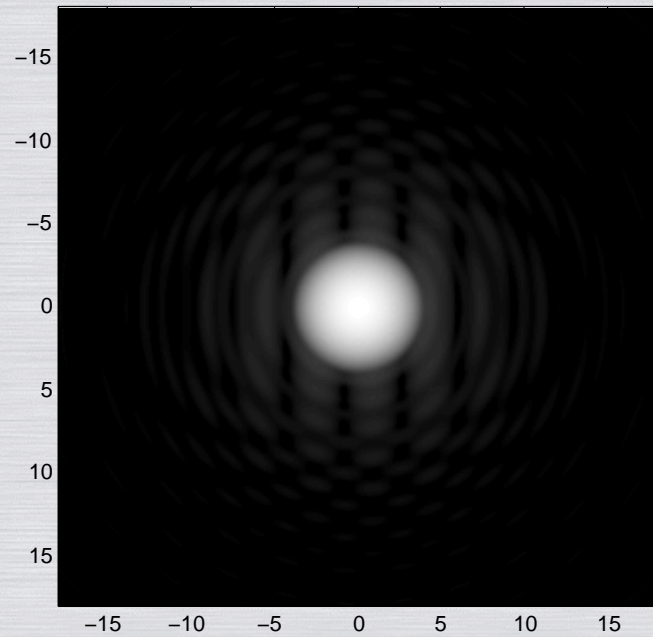


The ideal PSF associated with the amplitude apodization from the previous slide. Image plane angles are given in multiples of λ/D .

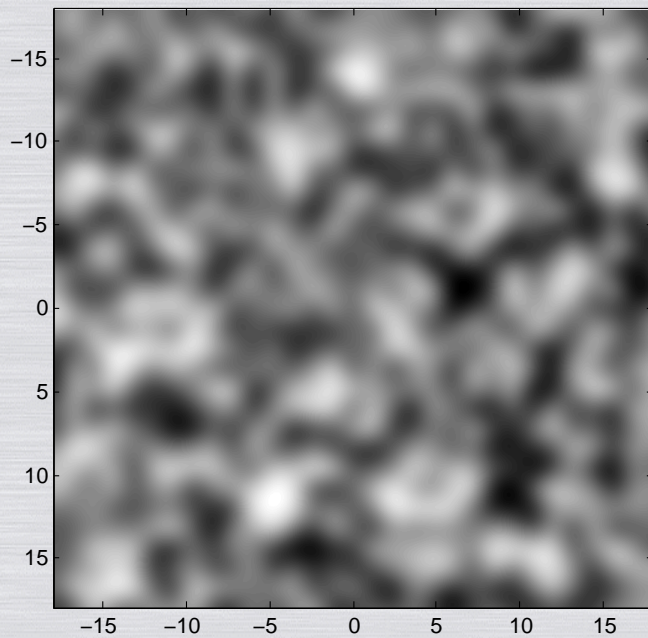
Phase error



PSF, log scale



Phase error



PSF, log scale

