

Dumbbell Nebula

1300 ly



Dumbbell Nebula

1300 ly



Dumbbell Nebula

1300 ly



Dumbbell Nebula

Seestar S30



Orion Nebula

1340 ly



Orion Nebula

Seestar S30



Orion Nebula—Close Up



Orion Nebula—Hubble



Orion in the Daytime

Sept. 9, 2007

Starlight Express SXV-H9 on 10'' RC at f/9
H α (13 nm bandwidth)

06:20–06:22 EDT

6 \times 5 seconds



SUNRISE at 06:23 EDT local time



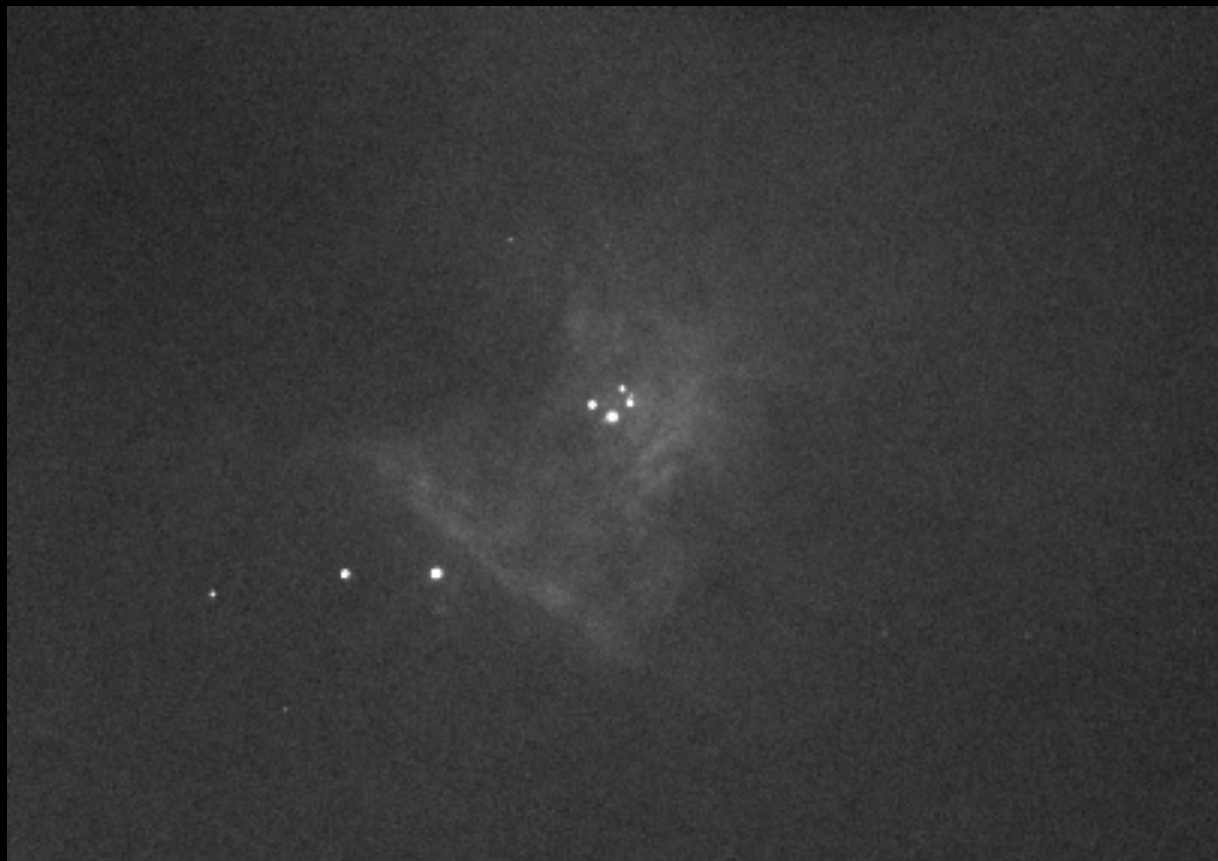
Orion in the Daytime

Sept. 9, 2007

Starlight Express SXV-H9 on 10" RC at f/9
H α (13 nm bandwidth)

06:22–06:36 EDT

33 \times 1 seconds



SUNRISE at 06:23 EDT local time



Orion in the Daytime

Sept. 9, 2007

Starlight Express SXV-H9 on 10" RC at f/9
H α (13 nm bandwidth)

06:36–06:47 EDT

118 \times 0.2 seconds



SUNRISE at 06:23 EDT local time



Orion in the Daytime

Sept. 9, 2007

Starlight Express SXV-H9 on 10" RC at f/9
H α (13 nm bandwidth)

06:47–06:55 EDT

110 \times 0.2 seconds



SUNRISE at 06:23 EDT local time



Orion in the Daytime

Sept. 9, 2007

Starlight Express SXV-H9 on 10" RC at f/9
H α (13 nm bandwidth)

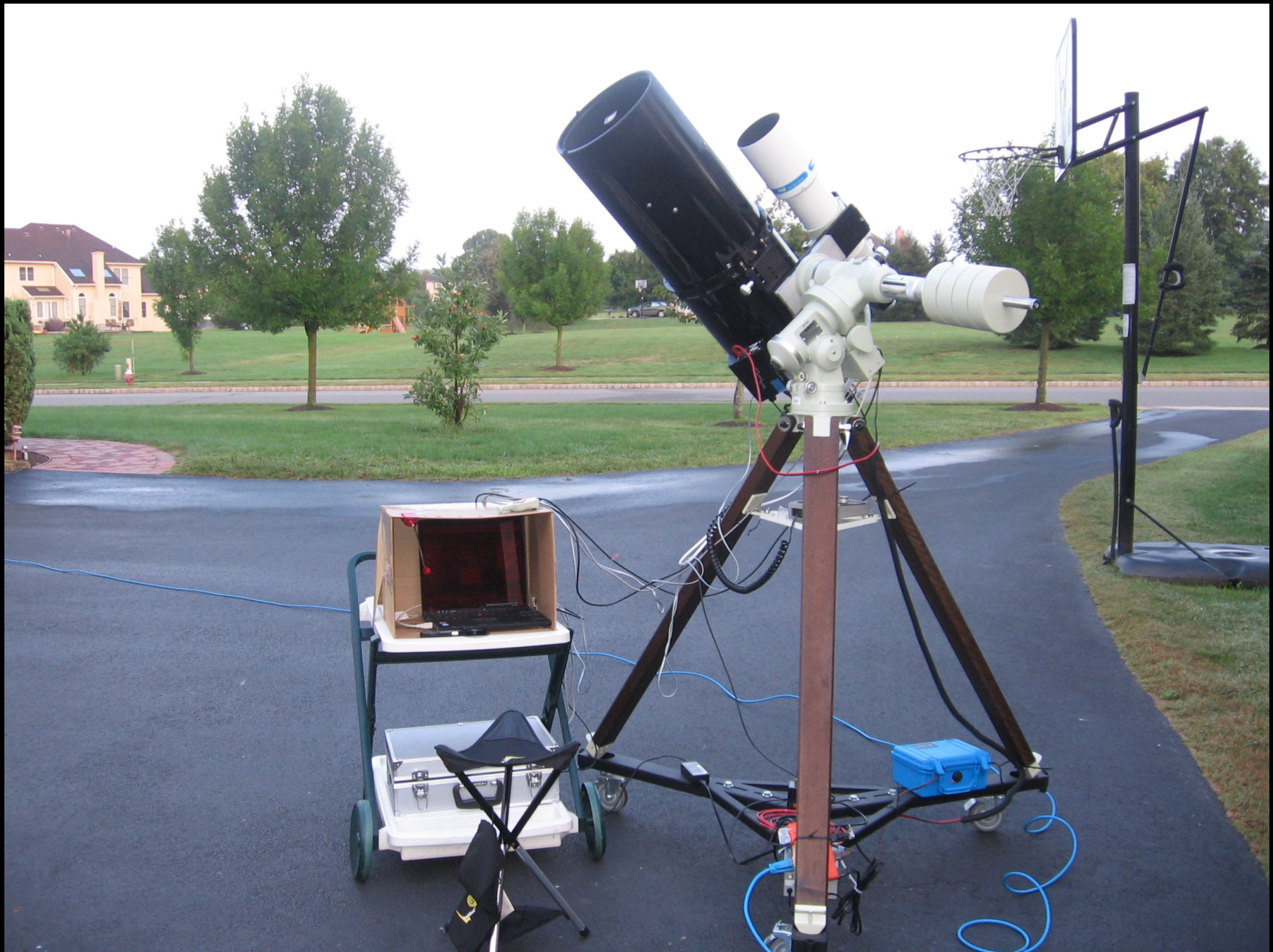
06:55–07:03 EDT

110 \times 0.1 seconds



SUNRISE at 06:23 EDT local time







Back to Nighttime



Running Man Nebula

1500 ly



Rosette Nebula

5200 ly



Rosette Nebula—New Camera



Rosette Nebula—Widefield



Rosette Nebula—With Moon



Rose

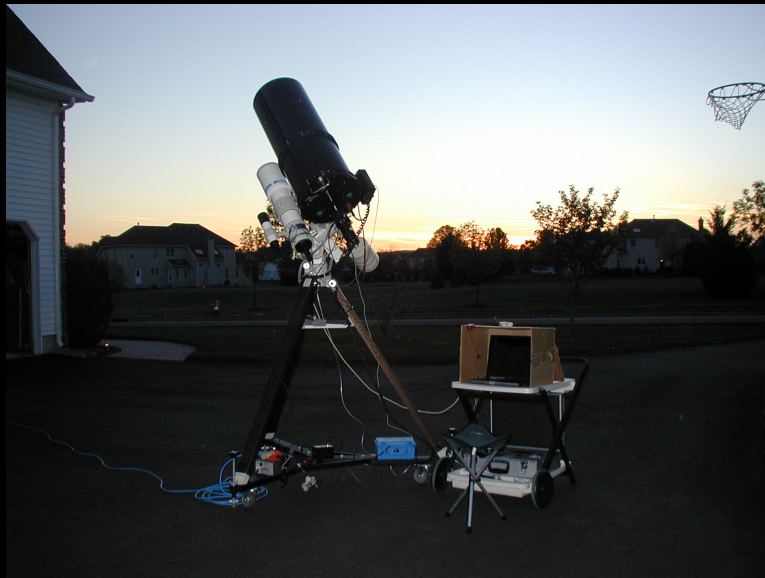


Comparison

Driveway



Mt. Palomar (48-inch)

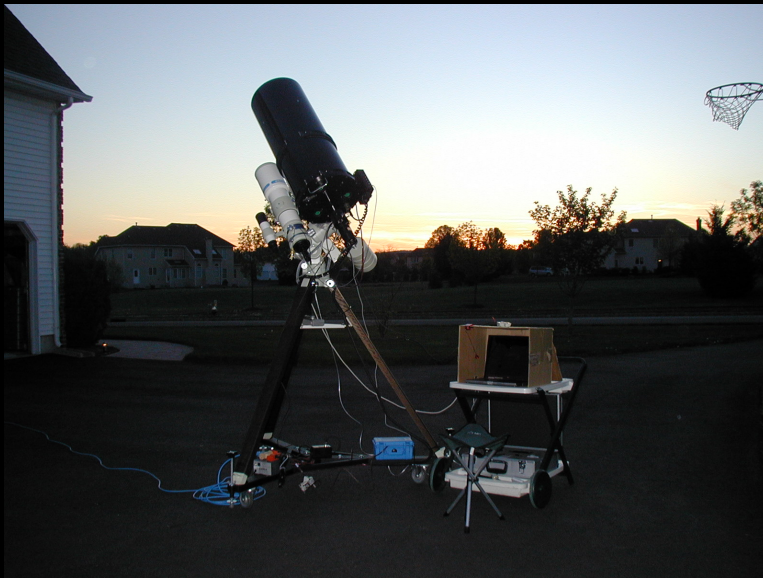


Denoised

Driveway



Mt. Palomar (48-inch)



Pleiades

444 ly



Subaru

444 ly



Subaru

Seestar S30



Eagle Nebula

5700 ± 400 ly



Ring Nebula

2600 ± 100 ly

