

# Moving Further Out

Robert J. Vanderbei

2023

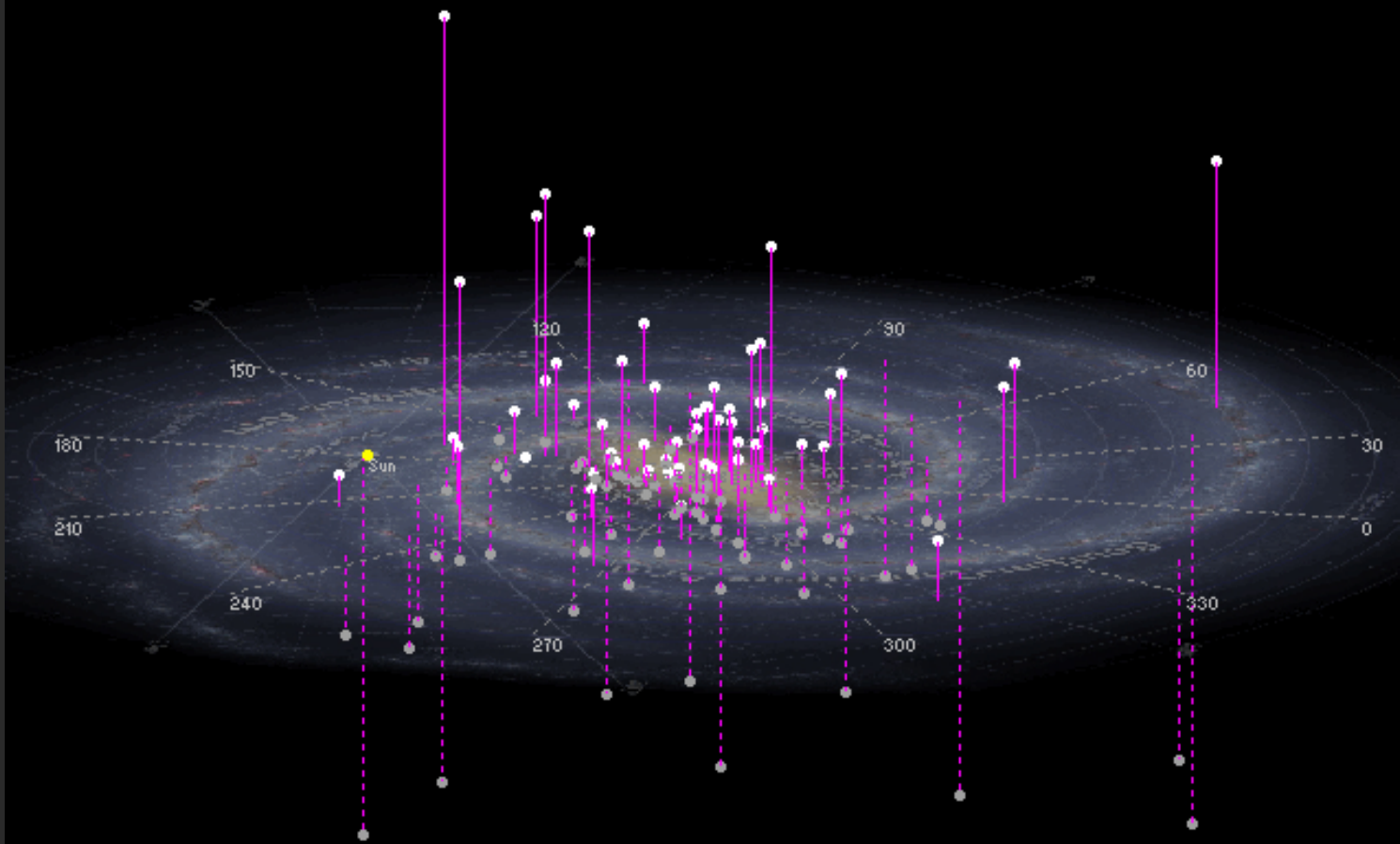
Freshman Seminar 131

<http://vanderbei.princeton.edu/>

# The 119 globular clusters within 50,000 LY of the galactic centre

Galactic centric (galactic longitude and latitude)

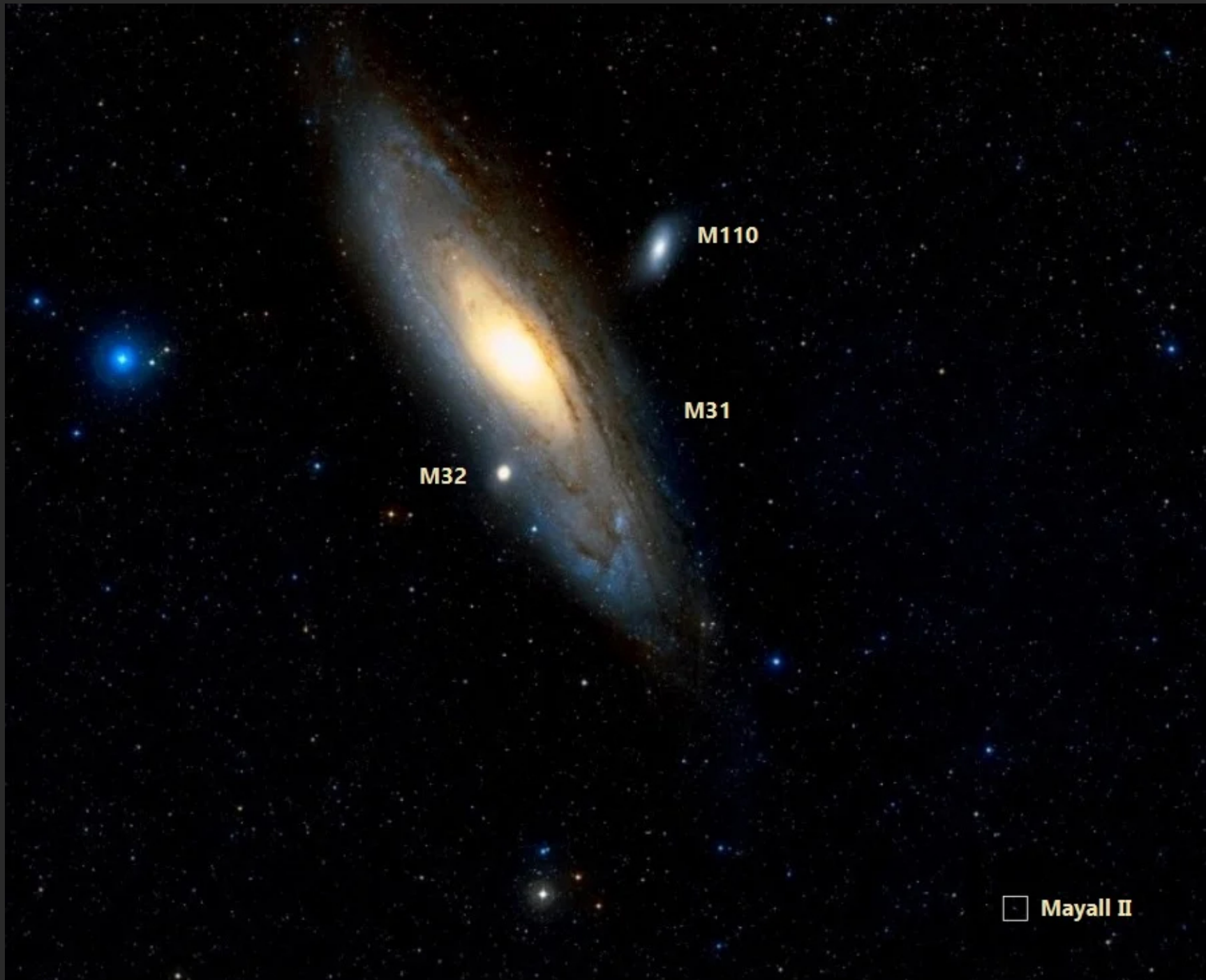
5,000 LY



# M31 – A Nearby Galaxy

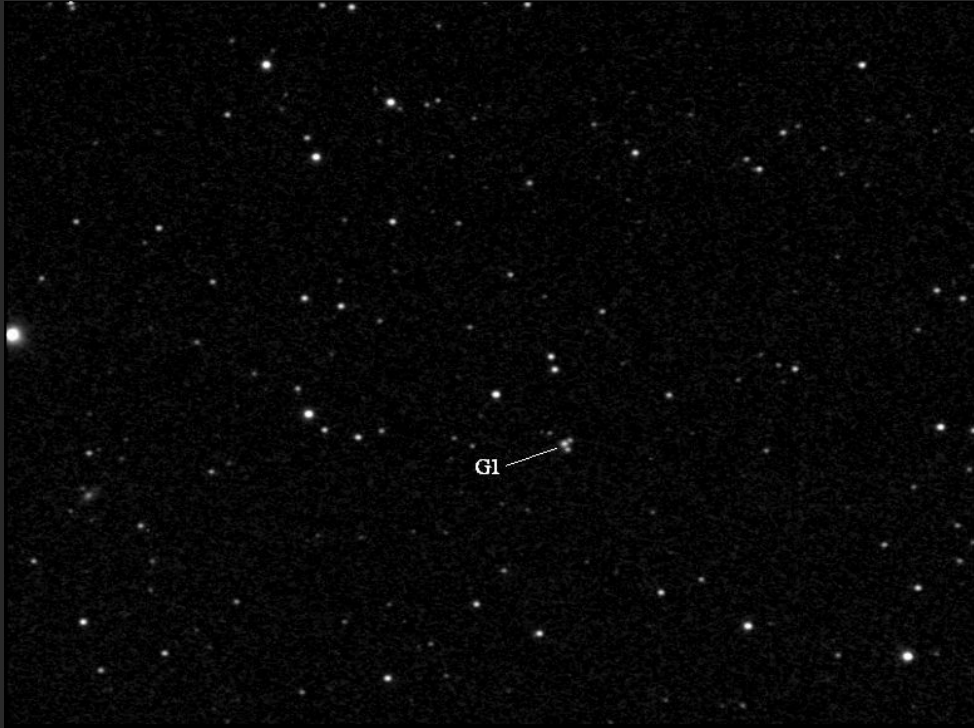


# Mayall-II – A Globular Cluster Near M31



# Mayall-II – A Globular Cluster Near M31

My Questar



Hubble Space Telescope



Some More Slides...

# Stars Have Various Colors

Here's a pair of binary stars...

Albireo...



$\epsilon$ -Bootes...



The Coathanger asterism...



The Coathanger asterism taken with Seestar S30



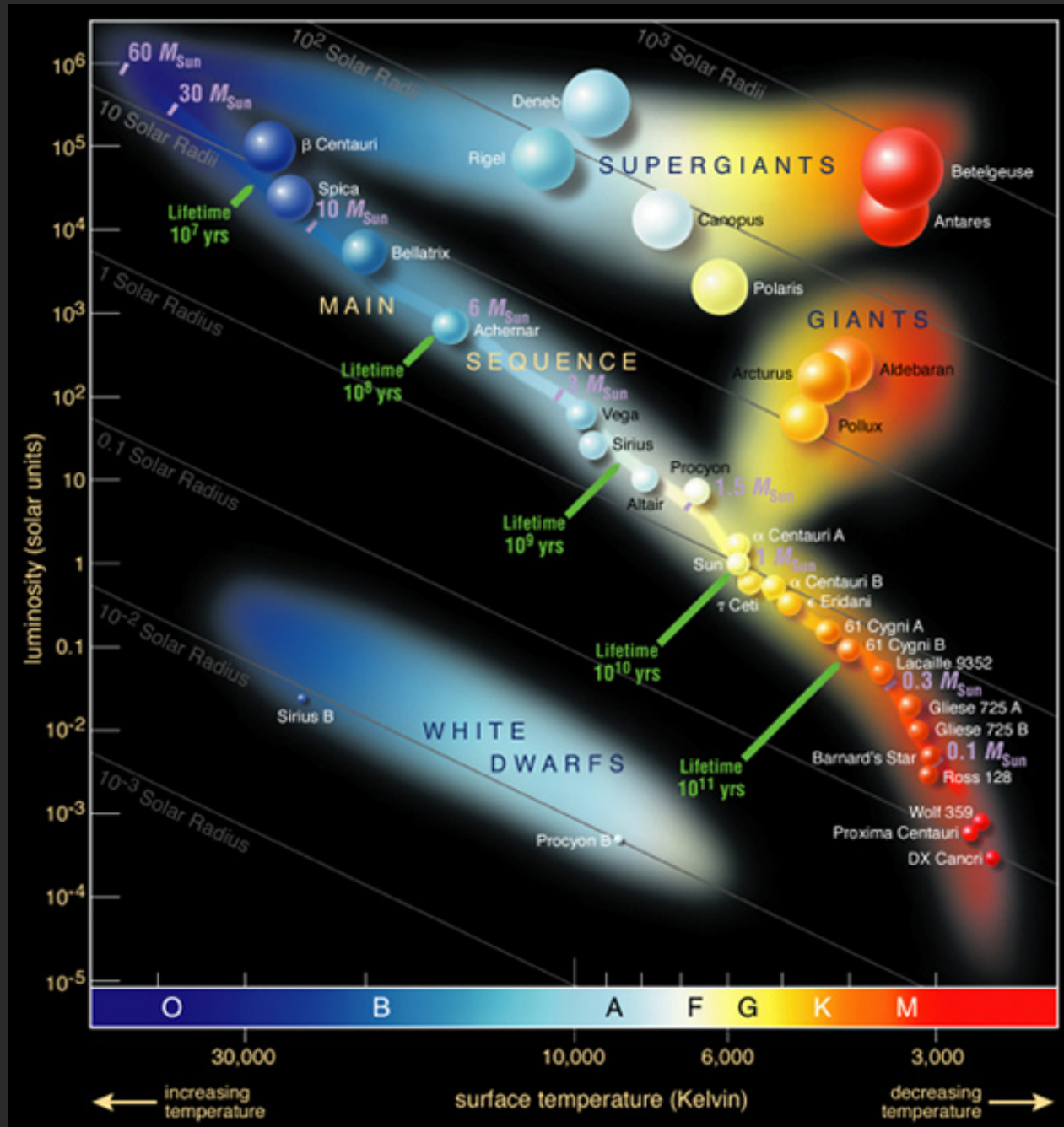
# Open Cluster NGC 7789...



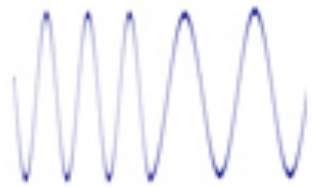
# Globular Cluster M13...



# Hertzsprung-Russell Diagrams



Red Orange Yellow Green Blue Indigo Violet

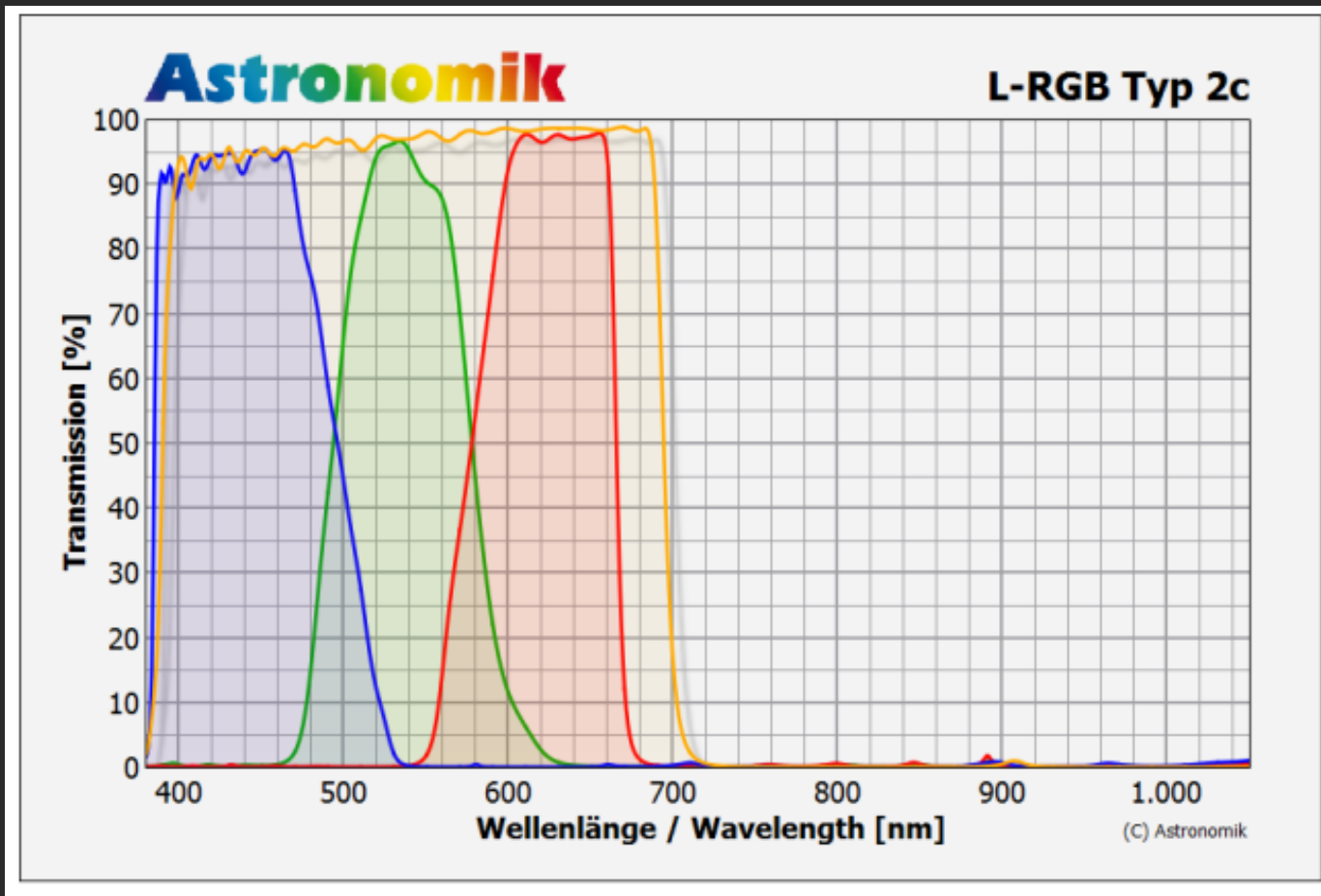


high frequency

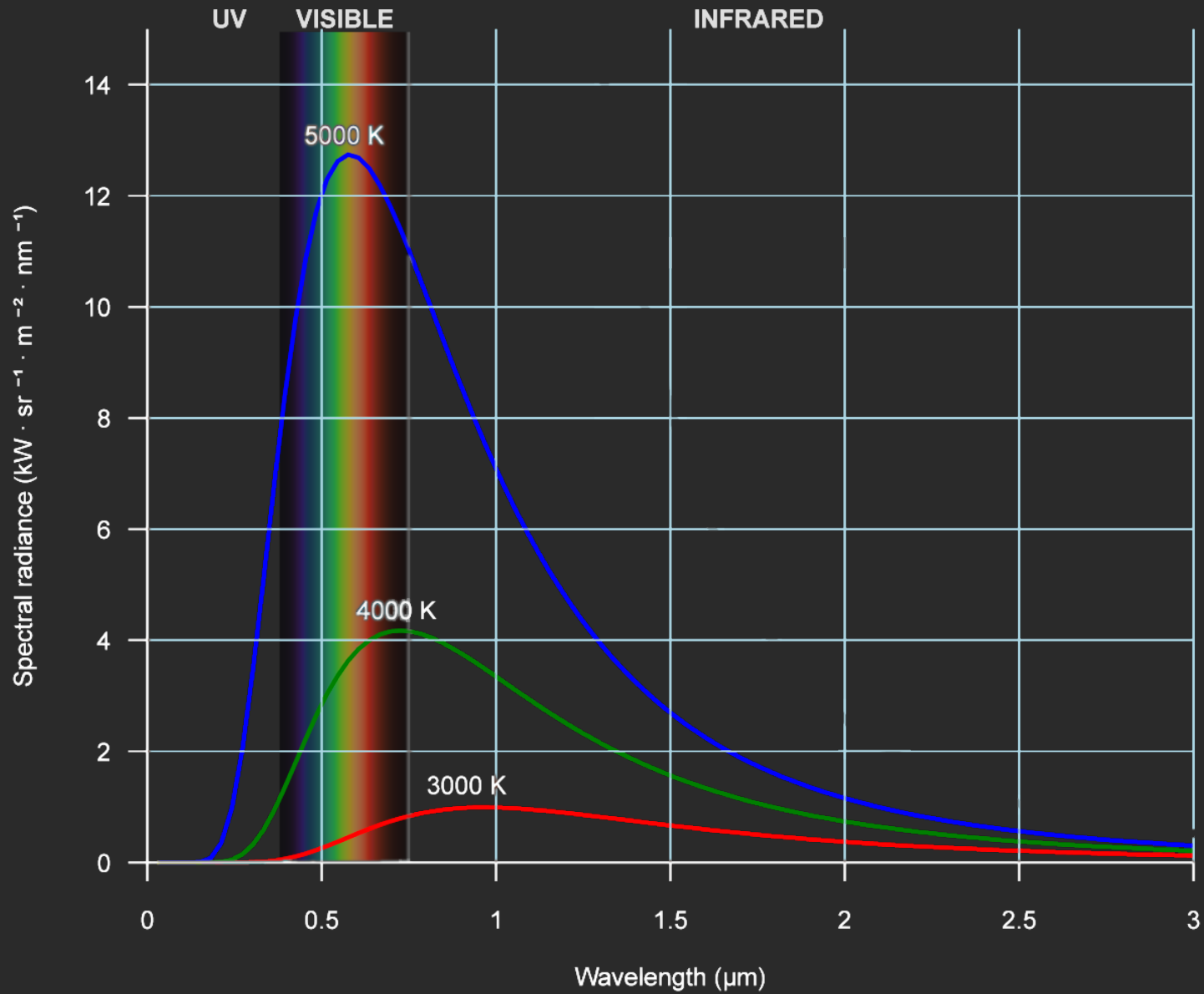


low frequency

# LRGB



# Black-body Radiation



# Quantum Mechanics

